

CONTINUING MEDICAL EDUCATION ΣΥΝΕΧΙΖΟΜΕΝΗ ΙΑΤΡΙΚΗ ΕΚΠΑΙΔΕΥΣΗ

Hematology-Cell Morphology – Case 14

The presence of these morphological features of megakaryocytic series in the bone marrow smears are characterized by of hyperplasia or hypoplasia of the megakaryocytic series, mononuclear or binuclear megakaryocytes, increase of micro-megakaryocytes, megakaryocytes containing cytoplasmic vacuoles. In the peripheral blood existence of thrombocytopenia or thrombocytopenia, decrease platelet granulation, platelets with abnormal granules, giant platelets, persistence of microtubuli (ring-like forms), dilatation of microtubule system (Swiss cheese type appearance, absence of platelet aggregation in collagen etc.). In *in vitro* cultures growth in large clusters. They are present mainly in myelodysplastic syndromes, in megaloblastic anemia, in myelophthisic anemias, following different drugs therapy

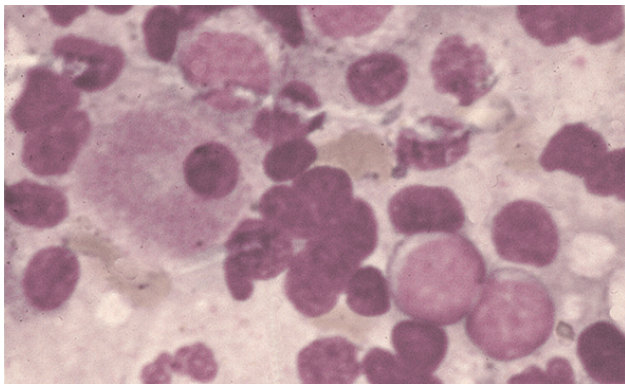


Figure 1

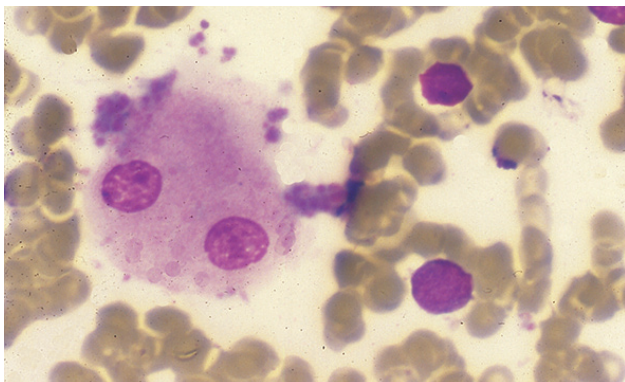


Figure 2

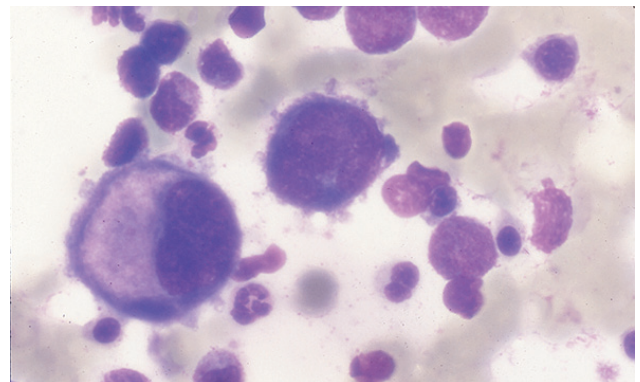


Figure 3

ARCHIVES OF HELLENIC MEDICINE 2022, 39(1):137–139
ΑΡΧΕΙΑ ΕΛΛΗΝΙΚΗΣ ΙΑΤΡΙΚΗΣ 2022, 39(1):137–139

J.V. Asimakopoulos,
L. Papageorgiou,
I. Vasilopoulos,
E. Konstantinou,
D. Galopoulos,
M.P. Arapaki,
C. Chatzidimitriou,
M. Belia,
A. Machairas,
J. Drandakis,
A. Kopsaftopoulou,
A. Piperidou,
A. Georgopoulou,
A. Karapaschalidis,
A. Alexandropoulos,
M.A. Lefaki,
P. Petsa,
F. Panitsas,
K. Benekou,
E. Sinni,
E. Plata,
M.P. Siakantaris,
P. Tsafaridis,
T. Vassilakopoulos,
M.K. Angelopoulou,
K. Konstantopoulos,
J. Meletis

Hematology Department and Bone Marrow Transplantation Unit, National and Kapodistrian University of Athens, School of Medicine, "Laikon" General Hospital, Athens, Greece

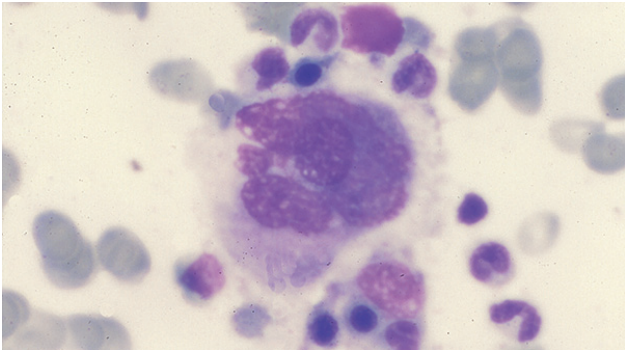


Figure 4

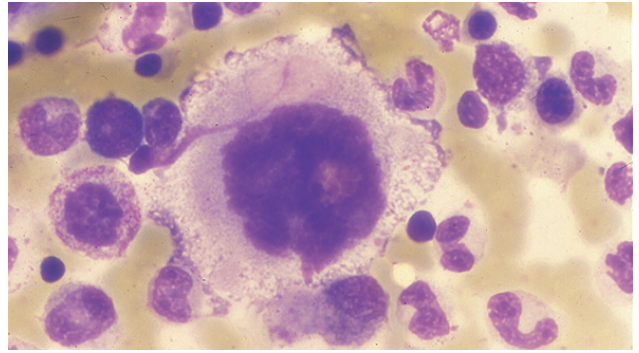


Figure 8

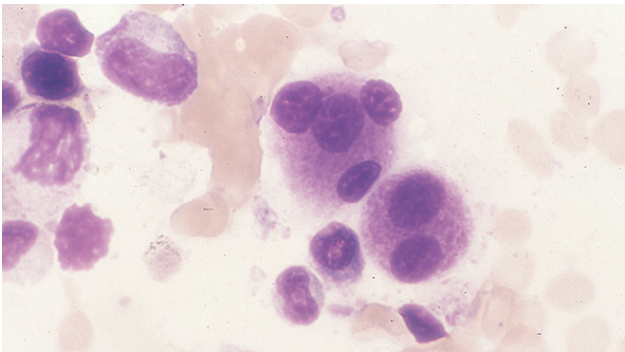


Figure 5

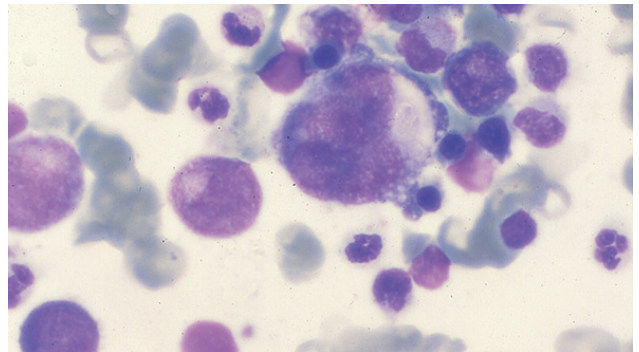


Figure 9

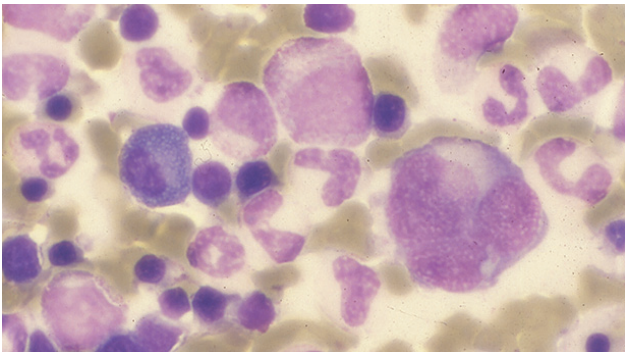


Figure 6

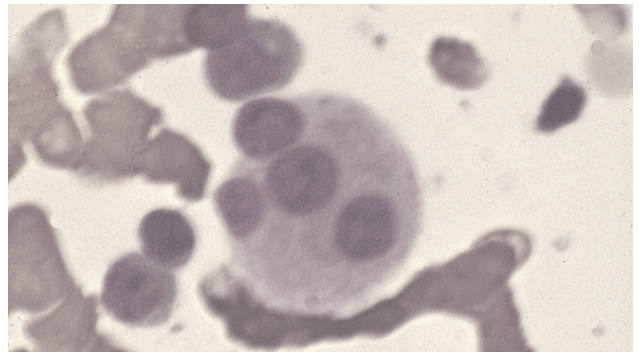


Figure 10

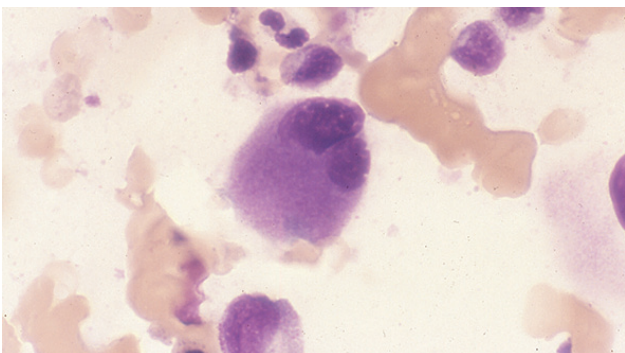


Figure 7

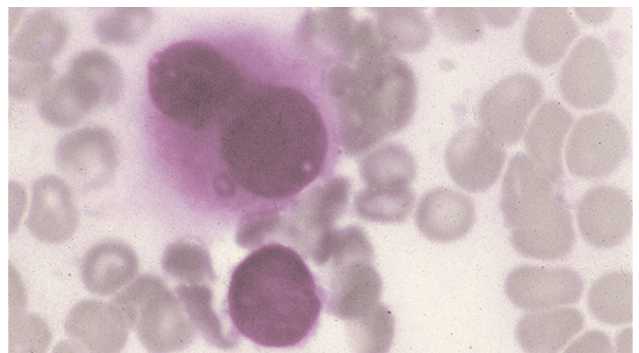


Figure 11

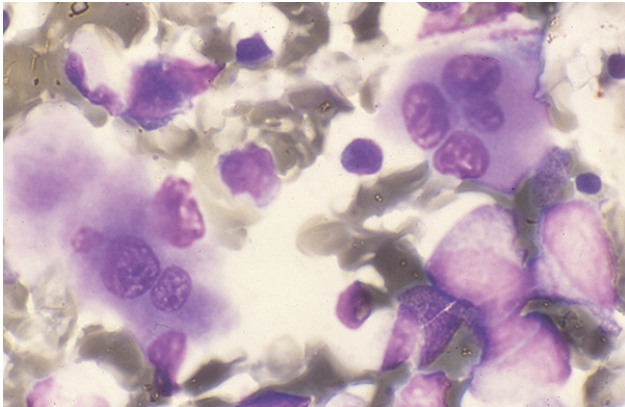


Figure 12

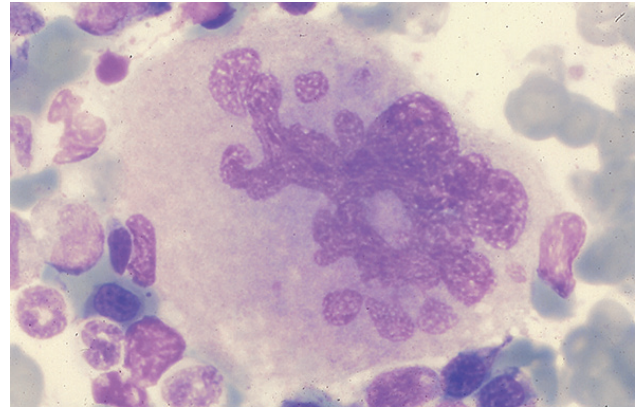


Figure 15

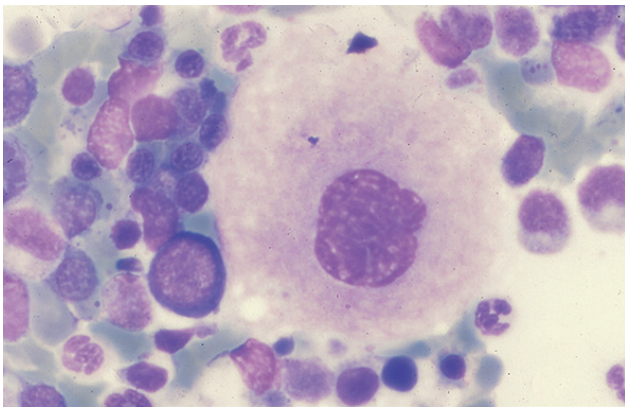


Figure 13

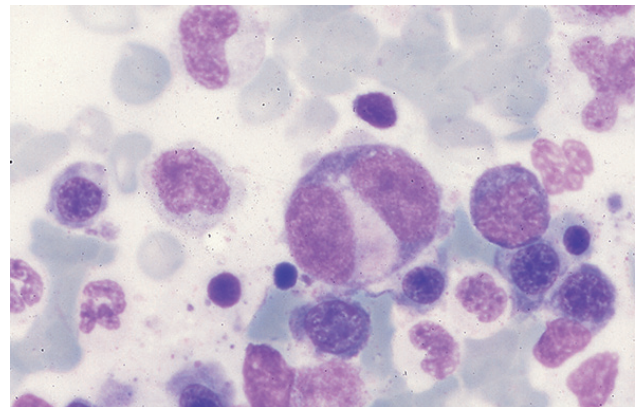


Figure 16

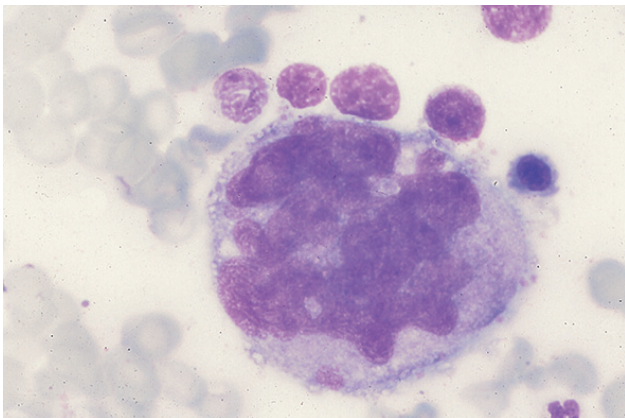


Figure 14

reacting with DNA metabolism or bone marrow infiltration by malignant cells.

References

- 1. MELETIS J. *Atlas of hematology*. 3rd ed. Nireas Publ Inc, Athens, 2009:270–273

Corresponding author:

J. Meletis, Hematology Department and Bone Marrow Transplantation Unit, National and Kapodistrian University of Athens, School of Medicine, "Laikon" General Hospital, Athens, Greece
e-mail: imeletis@med.uoa.gr